









SOPASUK MERCHA TIPCHA MERCHA

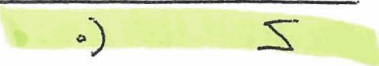
() ()

ETNACHTA MUNACH TIPCHA MERCHA

() ()




KATON MUNACH PASHITA MAPACH (KADMA)





R'VII MUNACH AZLA KADMA


T'VIR DARGA


T'VIR (MERCHA)


HAFTARAH TROPES BY CLAUSE

MAPACH CLAUSE

Musical notation for the MAPACH CLAUSE, featuring a treble clef, a key signature of one flat, and a 4/4 time signature. The melody consists of five measures with the following lyrics: Kad-ma ma-pach pash-ta mu-nach ka-ton.

Cantillation symbols for the MAPACH CLAUSE, consisting of four rectangular boxes with various accents and a dot above the first box.

קדְמָא מִפְּשָׁא מִנַּח קָטוֹן

R'VII CLAUSE

Musical notation for the R'VII CLAUSE, featuring a treble clef, a key signature of one flat, and a 4/4 time signature. The melody consists of five measures with the following lyrics: Kad-ma az-la mu-nach r'-vi-i.

Cantillation symbols for the R'VII CLAUSE, consisting of four rectangular boxes with various accents and a dot above the first box.

קדְמָא אֲזֵלָא מִנַּח רְבִיעִי

T'VIR CLAUSE

Musical notation for the T'VIR CLAUSE, featuring a treble clef, a key signature of one flat, and a 4/4 time signature. The melody consists of five measures with the following lyrics: Dar-gah t' vir mer-cha t' vir.

Cantillation symbols for the T'VIR CLAUSE, consisting of four rectangular boxes with various accents and a dot above the first box.

דַּרְגָּא תְּבִיר מְרַבָּא תְּבִיר

MERCHA CLAUSE

Mer-cha tip-cha mu-nach et-nach-ta

Mer-cha tip-cha mer-che sof pe-suk

מֶרְכָּא טַפְחָא מְנַח אֶתְנַחְתָּא

מֶרְכָּא טַפְחָא מֶרְכָּא סוֹף-פְּסוּק

GERSHAYIM

MUNACH L'GARMEIT

Ger-sha-yim Mu-nach mu-nach l'gar-me

גֶּרְשָׁיִם

מְנַח מְנַח לְגַרְמֵי

T'LISHA K'TANAH

T'LISHA G'DOLAH

Mu-nach t'li-she k'ta-nah Mu-nach t'li-she g'do-lah

מְנַח תְּלִישָׁא קְטַנָּה

ADC AAAACAAA / ADC AAAAABAAA

מְנַח תְּלִישָׁא גְדוֹלָה

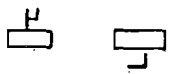
PAZER

ZAKEF GADOL



Mu-nach Pa-zer

Za-kef ga-dol

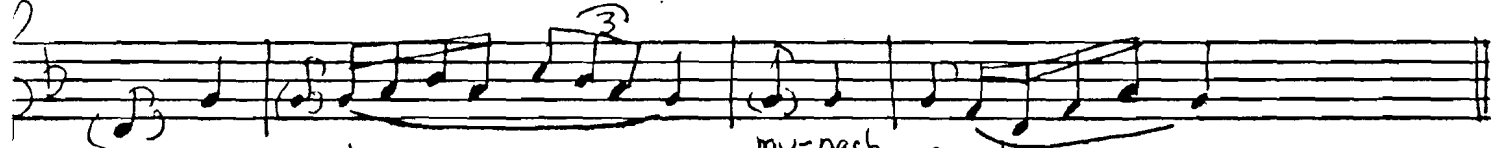


פּוֹר מִנַּח



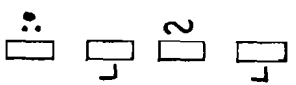
זָקַף-גָּדוֹל

SEGOL CLAUSE



Mu-nach zar-ka

mu-nach se-gol



מִנַּח זָרְקָא מִנַּח סְגוֹל

Y'TIV

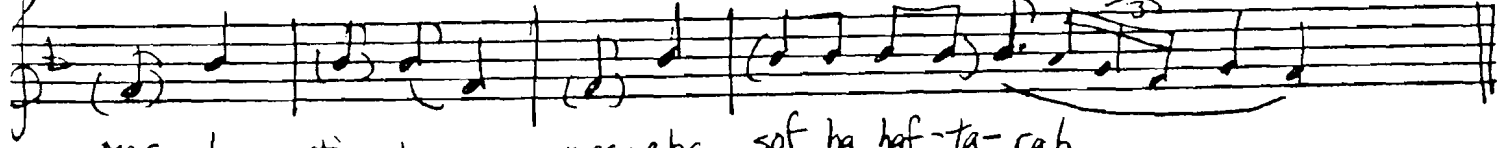


Y'-tiv Mu-nach ka-ton

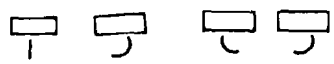


יְתִיב מִנַּח קָטוֹן

END OF HAFTARAH



Mer-cha tip-cha mer-cha sof ha haf-ta-rah



מִרְכָּא טִפְחָא מִרְכָּא סוֹף-הַהַפְטָרָה

PRACTICE DRILL

(1) | 1 2 3 4 5 6 7 8 | 9 10 11 12 | 13 14 15 16 | 17 18 19 20 | 21 22 23 24 | 25 26 27 28 |

(2) | 1 2 3 4 5 6 7 8 | 9 10 11 12 | 13 14 15 16 | 17 18 19 20 | 21 22 23 24 | 25 26 27 28 |

(3) | 1 2 3 4 5 6 7 8 | 9 10 11 12 | 13 14 15 16 | 17 18 19 20 | 21 22 23 24 | 25 26 27 28 |

(4) | 1 2 3 4 5 6 7 8 | 9 10 11 12 | 13 14 15 16 | 17 18 19 20 | 21 22 23 24 | 25 26 27 28 |

(5) | 1 2 3 4 5 6 7 8 | 9 10 11 12 | 13 14 15 16 | 17 18 19 20 | 21 22 23 24 | 25 26 27 28 |

(6) | 1 2 3 4 5 6 7 8 | 9 10 11 12 | 13 14 15 16 | 17 18 19 20 | 21 22 23 24 | 25 26 27 28 |

(7) | 1 2 3 4 5 6 7 8 | 9 10 11 12 | 13 14 15 16 | 17 18 19 20 | 21 22 23 24 | 25 26 27 28 |

(8) | 1 2 3 4 5 6 7 8 | 9 10 11 12 | 13 14 15 16 | 17 18 19 20 | 21 22 23 24 | 25 26 27 28 |

(9) | 1 2 3 4 5 6 7 8 | 9 10 11 12 | 13 14 15 16 | 17 18 19 20 | 21 22 23 24 | 25 26 27 28 |